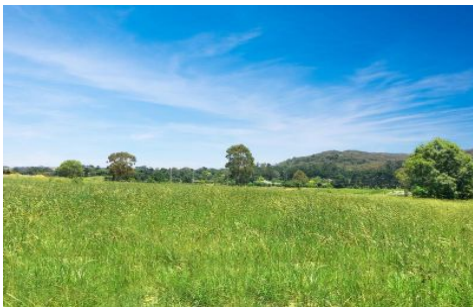




CAMERONS



18 Sir James Fairfax Circuit Bowral NSW

Located in the new Retford Park Estate, Bowral's new and exclusive subdivision. Wonderful north facing block with wide frontage, allowing extra flexibility for your new home design. This block has all underground services, open space and beautiful parkland. Don't delay, secure your new highlands lifestyle today!

Price : \$ 565,000
Land Size : 1247 sqm
View : <https://www.cameronsrealestate.com.au/sale/nsw/southern-highlands/bowral/residential/land/5656737>



Ian Cameron
02 4889 8555



Client A	Contract No. 1326	Site SP4	Phase A
Designer B	Contract No. 1326	Site SP4	Phase A
Checker C	Contract No. 1326	Site SP4	Phase A
Author D	Contract No. 1326	Site SP4	Phase A
Approver E	Contract No. 1326	Site SP4	Phase A

CDS Civil Development Solutions	Civil Development Solutions 10/11 ROSS ST Level 10, Regent, Development and Project Consultants Office DL 68-70 Station Street BOWRAL NSW 2576 P 482-1377 E info@civildes.com.au www.civildes.com.au	WAGGAMAH SHIRE COUNCIL, CA RET FORD PARK OLD SOUTH ROAD BOWRAL MR J.O. FAIRFAX	SALES PLAN STAGE 4 RED RATIO 1:1500	Designed JC Drawn RJA Checked SA Author AHD Date 21/04/15	A3 1326 SP4 WEST Sheet A Phase A
---	--	---	---	--	--