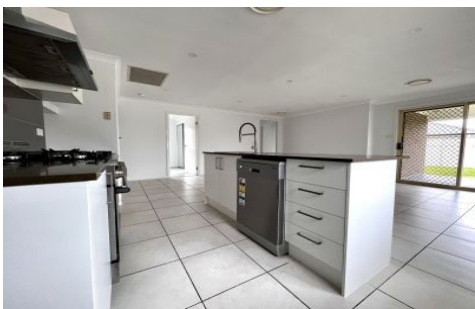




CAMERONS



28 Isedale Road Braemar NSW

4 2 2

family home featuring

4 bedrooms main with ensuite and walk-in robe all others feature built-ins
Rumpus room,
Kitchen/lounge/dining area
ducted reverse cycle air con
Main bathroom with separate toilet
laundry
covered alfresco area
double garage with internal access
fully fenced yard

pets on application

PLEASE NOTE applications to be submitted prior to inspection

View : <https://www.cameronsrealestate.com.au/lease/nsw/southern-highlands/braemar/residential/house/7227880>



Penny Cameron
02 4889 8555



Sharyn Hamilton
02 4889 8555

<https://www.cameronsrealestate.com.au>